

## DELIVERY DETAILS

RETAILER NAME: ..... COMPLETED BY: .....

RETAILER PURCHASE ORDER NO: ..... DATE: .....

STREET ADDRESS: .....

SUBURB: ..... STATE: ..... POST CODE: .....

## CUSTOMER DETAILS

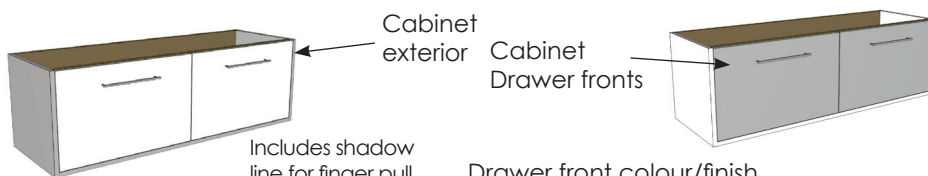
CUSTOMER NAME: ..... CUSTOMER SIGNATURE: .....

## CABINET CONFIGURATION

Width	Depth	Basin Type	Mounting	Drawers	Basin Configuration	Cabinet Code
<input type="checkbox"/> 600	<input type="checkbox"/> 430 <input type="checkbox"/> 500	<input type="checkbox"/> Counter Top <input type="checkbox"/> Under Counter	<input type="checkbox"/> Floor Standing <input type="checkbox"/> Wall Hung	2 Drawer only <input type="checkbox"/> 1 Drawer <input type="checkbox"/> 2 Drawer	Single basin only	
<input type="checkbox"/> 900	<input type="checkbox"/> 430 <input type="checkbox"/> 500	<input type="checkbox"/> Counter Top <input type="checkbox"/> Under Counter	<input type="checkbox"/> Floor Standing <input type="checkbox"/> Wall Hung	2 Drawers only <input type="checkbox"/> 1 Drawer <input type="checkbox"/> 2 Drawer	Single basin only	
<input type="checkbox"/> 1200	<input type="checkbox"/> 430 <input type="checkbox"/> 500	<input type="checkbox"/> Counter Top <input type="checkbox"/> Under Counter	<input type="checkbox"/> Floor Standing <input type="checkbox"/> Wall Hung	4 Drawer only <input type="checkbox"/> 2 Drawer <input type="checkbox"/> 4 Drawer	Single basin only	
<input type="checkbox"/> 1500	<input type="checkbox"/> 430 <input type="checkbox"/> 500	<input type="checkbox"/> Counter Top <input type="checkbox"/> Under Counter	<input type="checkbox"/> Floor Standing <input type="checkbox"/> Wall Hung	4 Drawers only <input type="checkbox"/> 2 Drawer <input type="checkbox"/> 4 Drawer	<input type="checkbox"/> Single basin <input type="checkbox"/> Double basin	

## COUNTER TOP OPTIONS

**Cabinet Colour / Finish Options** (see pages 3 & 4)



Exterior colour/finish ..... Drawer front colour/finish .....

2 PAC Drawer front texture .....

**Counter Top Material**

(see page 2)

20mm SilkSurface

Colour / Finish

.....

## BASIN SELECTION

Brand ..... Description ..... Code .....

## SOLID TOP - TAP HOLES

<input type="checkbox"/> No Tap Hole	<input type="checkbox"/> 1 Tap Hole	<input type="checkbox"/> 3 Tap Hole	430mm depth cabinets design for use with Wall Mounted tapware.	Some cabinet/basin combinations may limit tap hole positioning. Argent will be in contact should this occur.
<b>Tap Hole Position</b>	<input type="checkbox"/> Rear	<input type="checkbox"/> LHS <input type="checkbox"/> RHS		
<b>For Double Bowls</b>	<input type="checkbox"/> TH Outsides	<input type="checkbox"/> TH Insides		

## CABINET HANDLE OPTIONS - (see pages 4, 5 & 6)

Range Name ..... Range Size ..... Range Colour .....

## HANDLE FREE OPTIONS

FINGER PULL  NO HANDLES (NOT Fingerpull)

## UPGRADES

Details .....

**OFFICE USE ONLY**

ARGENT PO# .....

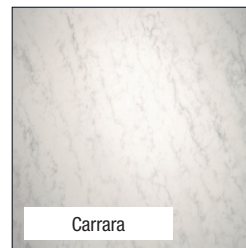
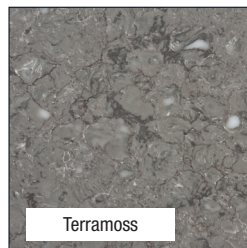
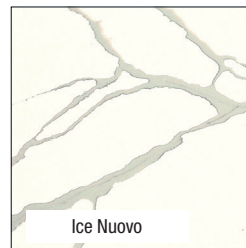
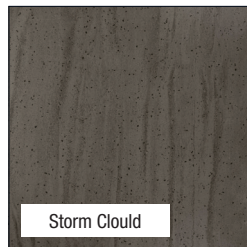
ARGENT SALES ORDER# .....

DATE REQ .....

## COUNTER TOP OPTIONS

### SilkSurface 20mm Solid Surface Collection

Manufactured using a special multi-process technique. Tops made from our SilkSurface range are high performance 20mm acrylic solid surfaces.



## CUSTOMISING OPTIONS

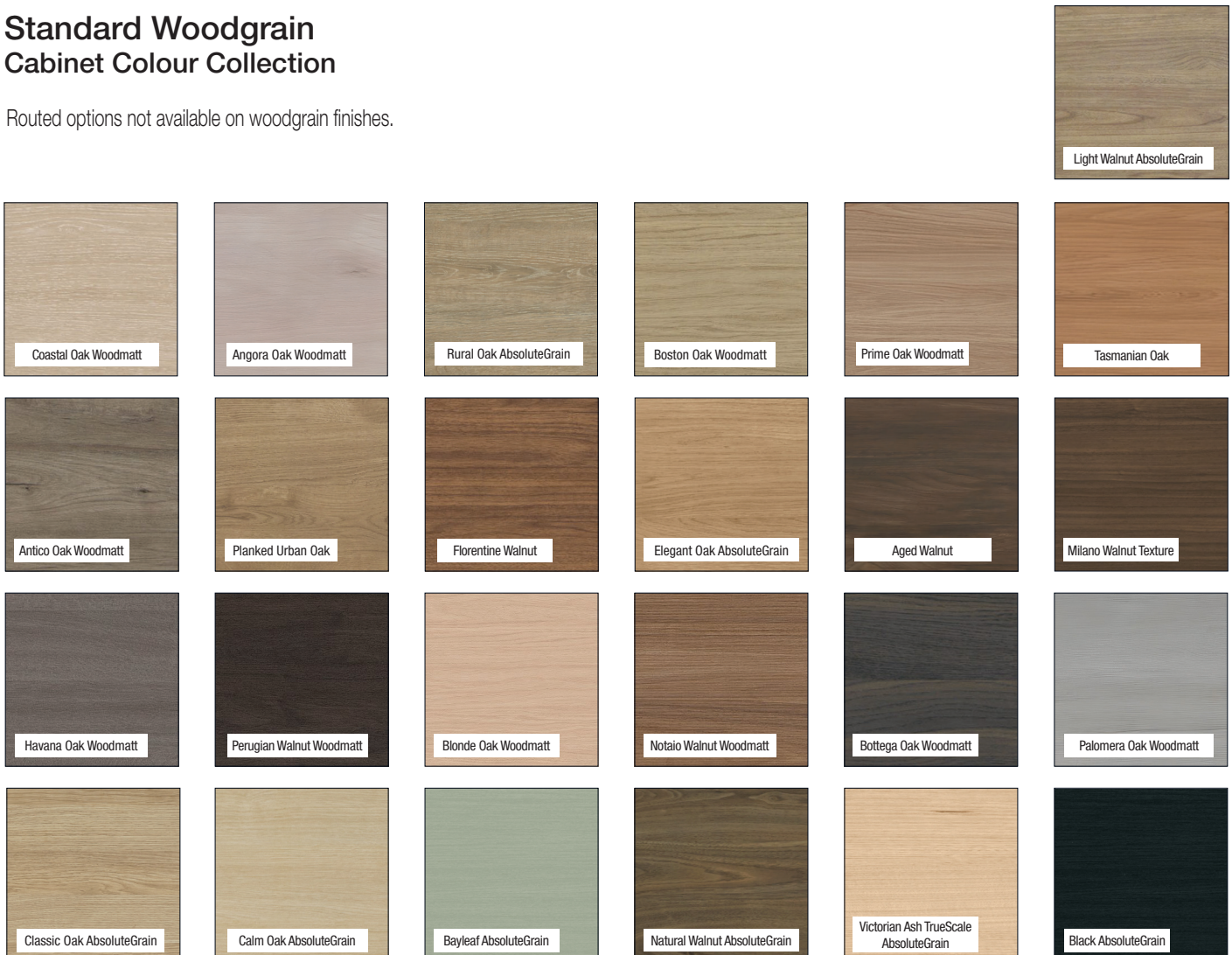
### Standard Paint Cabinet Colour Collection

All painted colours are finished with our durable 2 pack polyurethane hardening process.



### Standard Woodgrain Cabinet Colour Collection

Routed options not available on woodgrain finishes.



## CUSTOMISING OPTIONS

### Customising Options Cabinet Colour Collection

Routed options not available on woodgrain finishes.



## CABINET HANDLE OPTIONS

### FINGERPULL

Usable Drawer height is reduced with fingerpulls. Drawer and door widths might vary depending on cabinet layout. Available in all colours.



### DISC HANDLES

Stylish disc handles available in standard paint colours (see page 30). Available in 100mm and 200mm diameter. 200mm can split vertically or horizontally to create two modern handles.



200mm Disc Handles

### ARCH HANDLE

Available in 244mm & 340mm



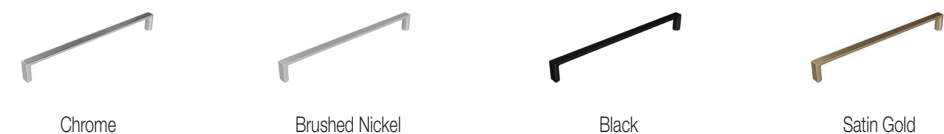
### CURVE HANDLE

Available in 198mm & 359mm



### D HANDLE

Available in 104mm, 138mm\*, 230mm, 361mm & 457mm

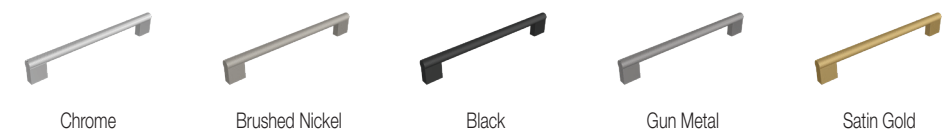


### FLAT KNOB\*



### LORD HANDLE

Available in 120mm\*, 215mm, 310mm & 457mm



\*Denotes handles suitable for Classic, Sussex and Victoria fronts.

More cabinet handles on next page.

## CABINET HANDLE OPTIONS

### OVA HANDLE\*

Available in  
100mm, 200mm  
& 350mm



Chrome



Brushed Nickel



Black



Brushed Gold

### RETRO HANDLE\*



Chrome



Brushed Nickel



Black



Pewter



Satin Gold

### ROUND KNOB\*



Chrome



Brushed Nickel



Black



Satin Gold

### SOLID LIP HANDLE

Available in  
50mm\* & 178mm



Chrome 50



Brushed Nickel 50



Black 50



Satin Gold 50



Chrome 178



Brushed Nickel 178



Black 178



Satin Gold 178

### SQUARE HANDLE

Available in  
224mm & 352mm



Chrome



Brushed Nickel



Black



Satin Gold

### WAVE HANDLE

Available in  
200mm & 350mm



Chrome



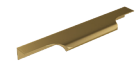
Brushed Nickel



Black



Gun Metal



Brushed Gold

### MONARCH HANDLE

Available in  
150mm\*, 240mm,  
340mm & 435mm



Chrome



Brushed Nickel



Black



Gun Metal



Satin Gold

### KURLED BAR HANDLE

Available in  
106mm\*, 202mm  
& 330mm



Chrome



Brushed Nickel



Black



Gun Metal



Satin Gold

### LOFT HANDLE\*

Available in  
200mm & 350mm



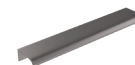
Chrome



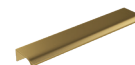
Brushed Nickel



Black



Gun Metal



Satin Gold

### ESCLPISE HANDLE\*



Chrome



Brushed Nickel



Black



Satin Gold

\*Denotes handles suitable for Classic, Sussex and Victoria fronts.

## CABINET HANDLE OPTIONS

### CRESCENT HANDLE\*



Chrome



Brushed Nickel



Black



Gun Metal



Brushed Gold

### DUKE KNOB\*

Available in  
150mm\*, 240mm,  
340mm & 435mm



Chrome



Brushed Nickel



Black



Gun Metal



Satin Gold

### DUKE T BAR\*

Available in  
106mm\*, 202mm  
& 330mm



Chrome



Brushed Nickel



Black



Gun Metal



Satin Gold

### DUKE HANDLE\*

Available in  
200mm & 350mm



Chrome



Brushed Nickel



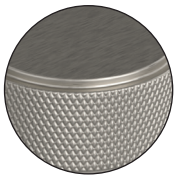
Black



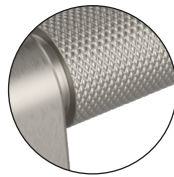
Gun Metal



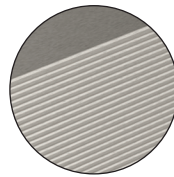
Satin Gold



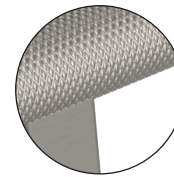
◀ Duke Detail



◀ Knurled Bar Detail



◀ Eclipse Detail



◀ Lord & Monarch Detail

\*Denotes handles suitable for Classic, Sussex and Victoria fronts.